

Test
Ch 2
Tuesday

Honors Dre Wed.

Oct 15-1:05 PM

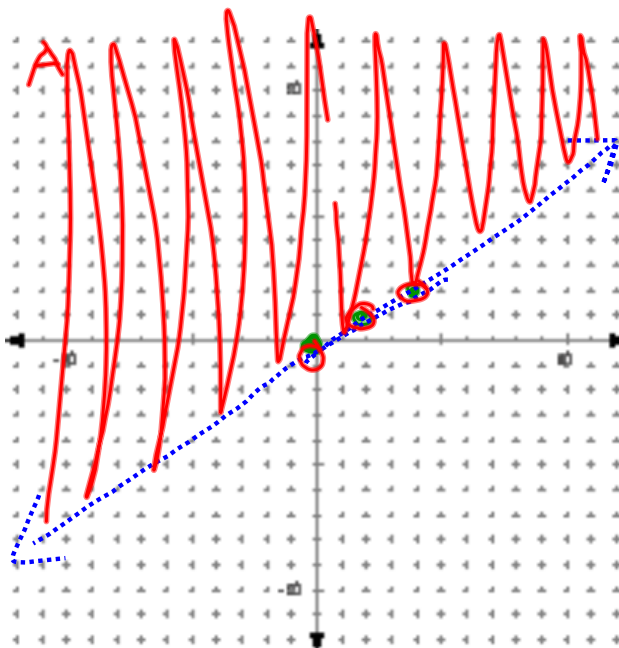
$$y = mx + b$$

2-7 Graphing Inequalities

Example 1

$$2y > x$$

$$y > \frac{1}{2}x + 0$$



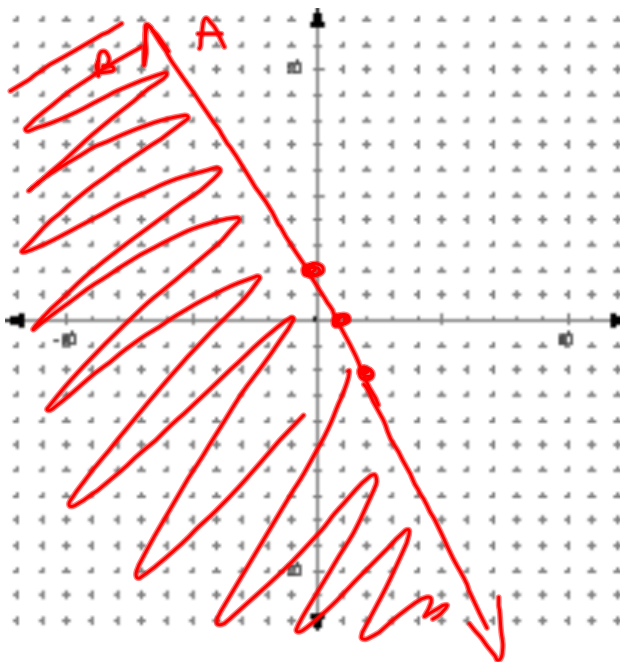
Oct 10-10:46 AM

Example 2

$$4x + 2y \leq 4$$

$$2y \leq -4x + 4$$

$$y \leq -2x + 2$$



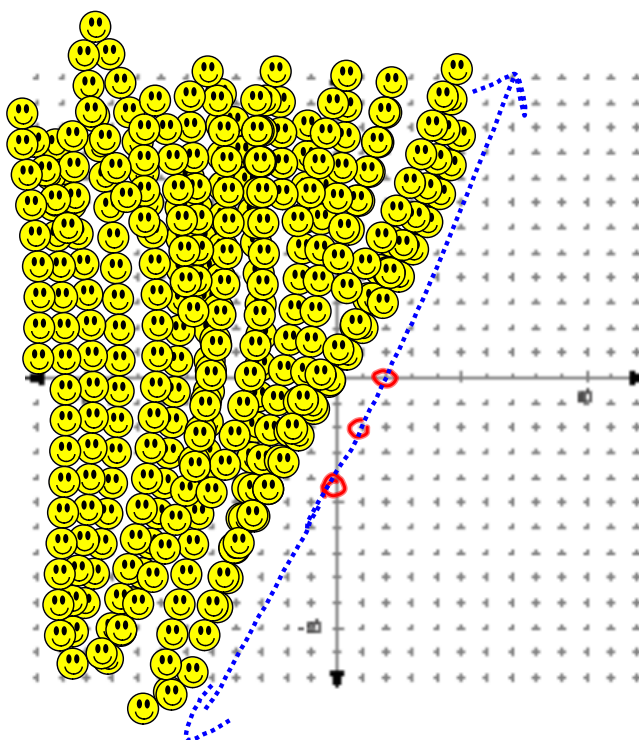
Oct 10-10:48 AM

Example 3

$$6x - 3y < 12$$

$$-3y < -6x + 12$$

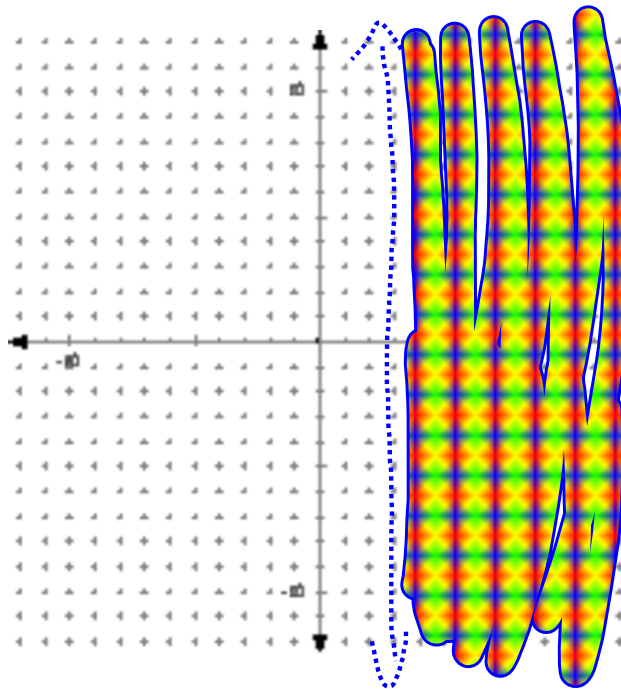
$$y > 2x - 4$$



Oct 10-10:49 AM

Example 4

$$x > 3$$



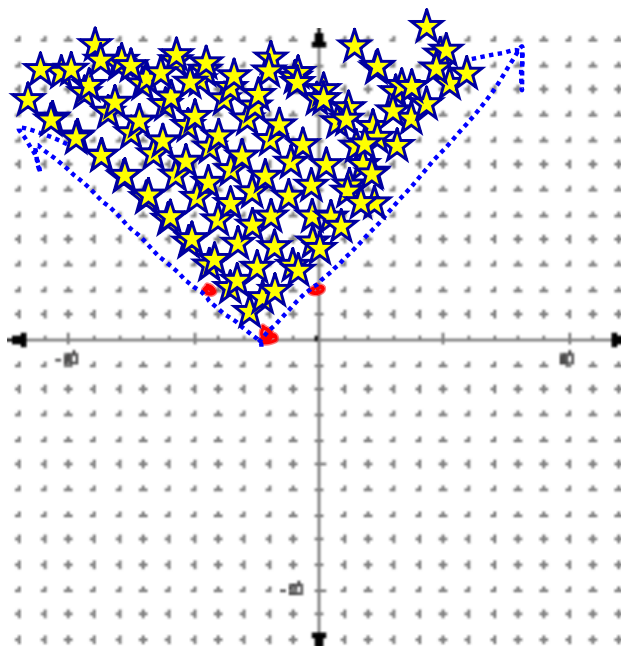
Oct 10-10:49 AM

Absolute Value

Example

$$y > |x + 2|$$

$$V(-2, 0)$$

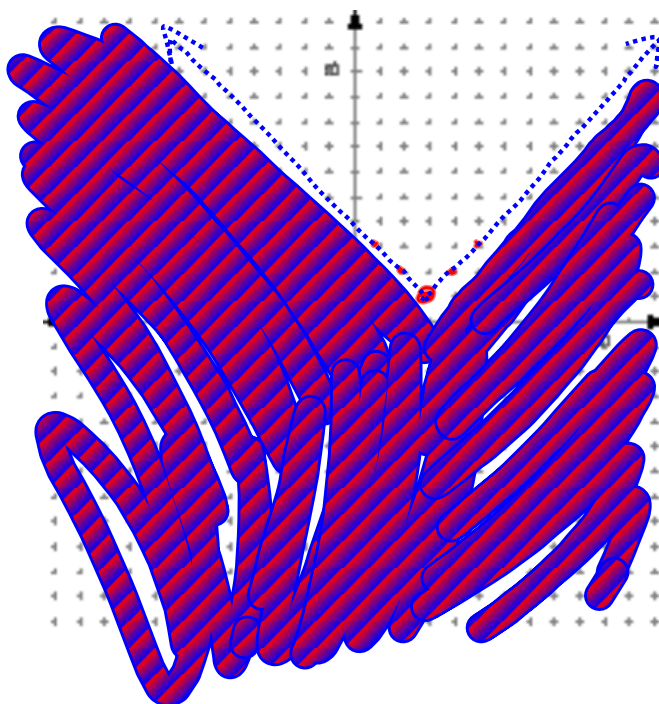


Oct 10-10:49 AM

Example

$$y < |x - 3| + 1$$

$$V(3, 1)$$



Oct 10-10:49 AM

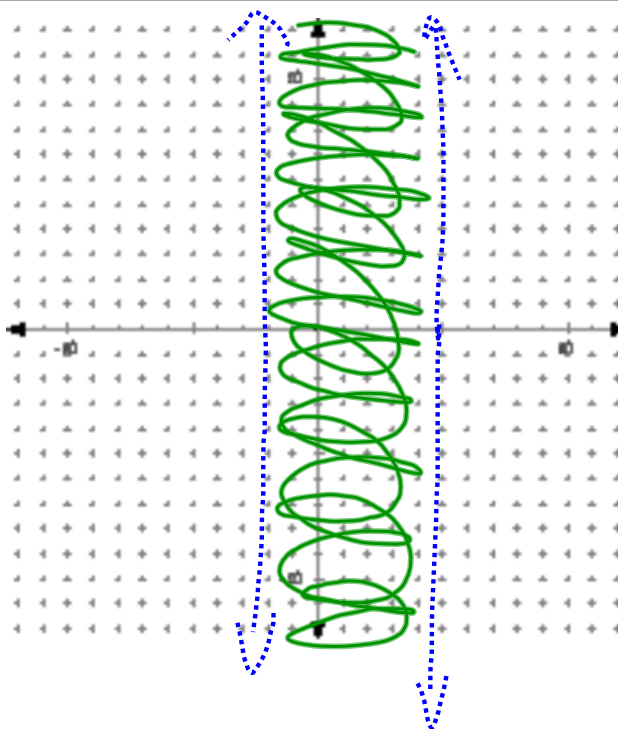
Example

$$-2 < x < 5$$

$$x > -2$$

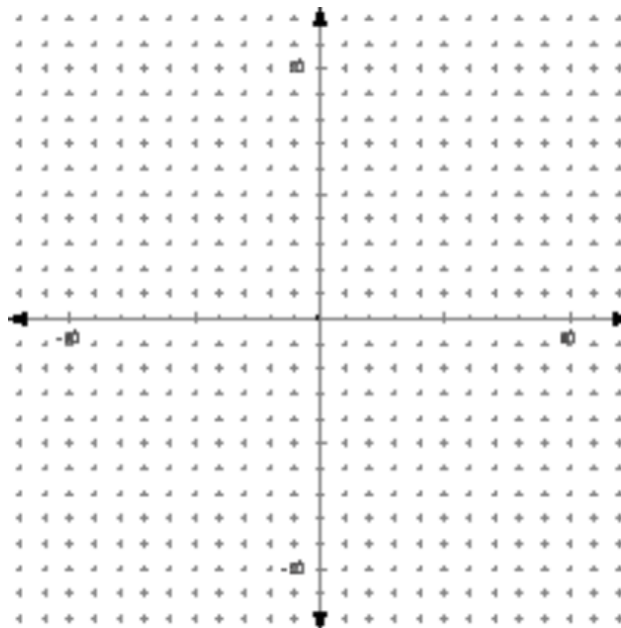
AND

$$x < 5$$



Oct 10-10:49 AM

Open to page 98
#s 10-12



Oct 10-10:49 AM

HW

p 98 14, 16, 20, 23, 24, 26-28, 35-37

Graph Paper

Oct 10-10:53 AM